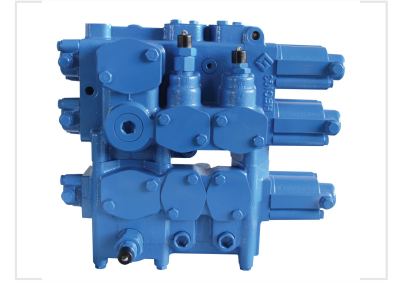
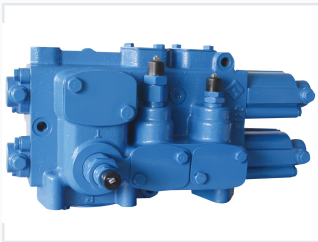


# Monoblock Directional Control Valve

This monoblock directional control valve is available in 2- or 3-section configurations. The valve is equipped with safety, overload, and charge valves, making it suitable for a wide range of applications.



## ADDITIONAL IMAGES



## Overview

### High-Performance Monoblock Directional Control Valve

The D32 Monoblock Directional Control Valve is engineered for precise fluid flow control in demanding hydraulic systems. It features a robust monoblock construction available in 2 or 3 sections, designed to handle high flow rates with low operating force thanks to its proportional pilot control. This valve is equipped with integrated safety, overload, and charge valves, making it a reliable choice for heavy-duty machinery requiring durable and easy-to-maintain hydraulic components.

## Performance Metrics

### Key Performance Metrics

**350 L/min**  
Rated Flow

**25 MPa**  
Rated Pressure

**415 L/min**  
Max Flow

## Technical Specifications

### Parameters

|  |   |
|--|---|
| Rated pressure (MPa)                             | 25  |
| Rated flow (L/min)                               | 350 (maximum flow: 415 L/min)                                 |
| Pressure range of main overflow valve (MPa)      | 10-25   |
| Pressure range of secondary overflow valve (MPa) | 15-31.5   |
| Hydraulic oil                                    | Mineral oil (HL, HLP) in accordance with DIN 51 524           |
| Fluid temperature range (°C)                     | -20-100   |
| Viscosity range (mm <sup>2</sup> /s)             | 10-380  |
| Fluid cleanliness                                | Not lower than GB/T 14039-93 level 19/16 or NAS 1638 level 10 |
| Weight (kg)                                      | D32: 57 D32A: 91  |

Detailed technical parameters including pressure ranges, flow rates, and fluid requirements for the D32 series.

### Pressure Ranges

| Component                | Pressure Range (MPa) |
|--------------------------|----------------------|
| Main Overflow Valve      | 10 - 25              |
| Secondary Overflow Valve | 15 - 31.5            |

### Fluid & Operating Conditions

- Hydraulic Oil: Mineral oil (HL, HLP) per DIN 51 524
- Fluid Temperature: -20°C to 100°C
- Viscosity Range: 10-380 mm<sup>2</sup>/s
- Cleanliness: GB/T 14039-93 level 19/16 or NAS 1638 level 10

## Design Features

### Spool Configuration

- Smoothly polished surfaces for precise control
- 3 positions or 4 positions available
- Serial-parallel or serial loop connections

## Applications

### Recommended Applications

Loader, Bulldozer, Agricultural machinery, Material handling, Compactor, Forestry machinery, Container crane, Mining machinery, Continuous shearer bolter miners

## Physical Properties

### Weight

| Model | Weight (kg) |
|-------|-------------|
| D32   | 57          |
| D32A  | 91          |