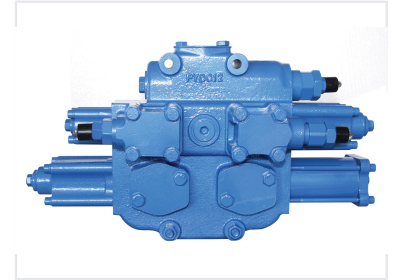


# Monoblock Directional Control Valve

This monoblock directional control valve is available in 2- and 3-section configurations. It controls fluid flow with excellent flow characteristics and requires low operating force due to its proportional pilot control design.



## Product Overview

### High-Performance Monoblock Directional Control Valve

This monoblock directional control valve is engineered for demanding hydraulic systems, providing exceptional flow control and durability. Designed with proportional pilot control, it requires minimal operating force, enhancing user efficiency. Equipped with integrated safety, overload, and charge valves, this unit is built for versatility across agricultural and material handling machinery, while ensuring easy maintenance and reliable, long-term operation.

## Technical Specifications

### Parameters

	YGDF32	YGDF25
Rated pressure (MPa)	20	20
Rated flow (L/min)	250 (maximum flow: 350L/min)	160 (maximum flow: 350L/min)
Pressure range of main overflow valve (MPa)	8-20	8-20
Pressure range of secondary overflow valve (MPa)	10-25	10-25
Hydraulic oil	Mineral oil (HL, HLP) in accordance with DIN 51 524	
Fluid temperature range (°C)	- 20-100	
Viscosity range (mm <sup>2</sup> /s)	10-380	
Fluid cleanliness	Not lower than GB/T 14039-93 level 19/16 or NAS 1638 level 10	
Weight (Kg)	44 (2 sections)	51 (3 sections)
	<a href="#">INQUIRY</a>	<a href="#">INQUIRY</a>

Performance data and technical specifications for the YGDF series.

### Key Performance Metrics

**20 MPa**

Rated Pressure

**250 L/min**

Rated Flow (YGDF32)

**160 L/min**

Rated Flow (YGDF25)

### Valve Capabilities

Feature	Specification
Loop Type	Serial-parallel, Parallel
Spool Function	3-position, 4-position
Max Flow	350 L/min
Main Overflow Pressure	8-20 MPa
Secondary Overflow Pressure	10-25 MPa

## Operational Details

### Operational Environment

- Fluid: Mineral oil (HL, HLP) per DIN 51 524
- Temperature Range: -20 to 100 °C
- Viscosity Range: 10-380 mm<sup>2</sup>/s
- Cleanliness Level: GB/T 14039-93 level 19/16 or NAS 1638 level 10

## Applications

### Industries and Applications

Loaders, Bulldozers, Agricultural Machinery, Material Handling