

# Mobile Solar Surveillance Trailer with 4G Camera

This mobile solar surveillance trailer provides a remote security solution with 24/7 monitoring. It features solar panels, a high-capacity battery, a telescopic mast, and a 360° rotatable CCTV box for flexible deployment.



## ADDITIONAL IMAGES



## Overview

**BIOLUX**  
YOUR PARTNER FOR PROTECTION

### HiSOLO™ Solar CCTV Trailer

- Off-grid Operation
- 24/7 Monitoring
- Instant Deployment
- Weatherproof Build
- Remote-Controlled Ops
- Anti-Theft Design

Mobile solar surveillance trailer providing off-grid, 24/7 monitoring capabilities.

### Mobile Solar Surveillance Solution

This mobile solar surveillance trailer provides a fully off-grid, 24/7 security solution designed for rapid deployment in remote or temporary locations. Engineered for durability, it features a hot-dip galvanized, weather-resistant structure with an integrated telescopic mast and high-capacity solar power system. It is an ideal choice for construction sites, event security, and traffic monitoring where grid power is unavailable.

## Power System



Detailed view of the rotatable solar panels and the surveillance mounting box.

### Solar Panel Configuration

**1200 W**

Max Power Output

**180 degrees**

Rotation

### Battery Storage Options

- GEL: 9600Wh / 12000Wh
- LFP: 8038Wh / 14336Wh

MPPT Controller

50A/45A with Remote Battery Monitoring

## Surveillance & Mast

Telescopic Mast Height

6.5m / 8.5m / 9m

CCTV Box Features

350° Rotation, 6-Sided Structure, Internal Cooling Fan, 4 Strobe Lights, POE Switch Included

Camera Capacity

6 units

## Construction & Durability

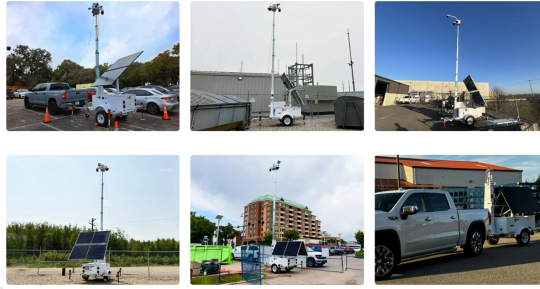
### Durability Rating

IP65 Waterproof • Hot-Dip Galvanized

Operating Temperature

-20°C to 55°C

## Logistics & Deployment



The trailer deployed for remote site security and surveillance.

### Trailer & Mobility Features

- Single Axle
- Foldable Tow Bar
- Forklift Holes
- Lift Rings
- 4x Manual Y-Shape Outriggers

### Container Shipping Capacity

Container Type	Capacity
20GP	6 units
40HQ	14 units