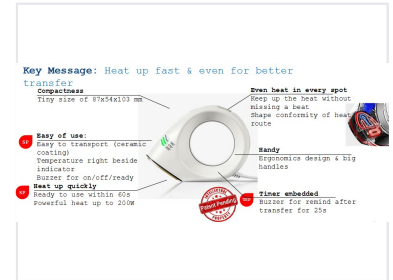
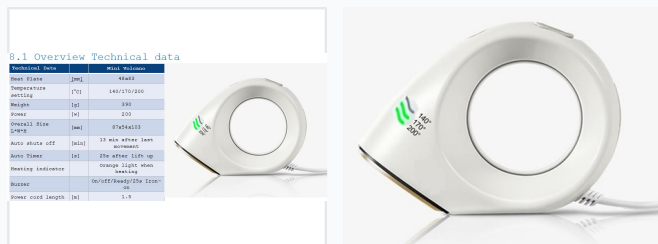


# Mini Heat Press for Crafts

This mini heat press is ideal for small or unique heat transfer projects. It features adjustable heat settings and a ceramic-coated heat plate for even, edge-to-edge heat.



## ADDITIONAL IMAGES



## Product Overview

### Compact Heat Transfer Solution

This portable mini heat press is designed to bring professional heat-transfer results to small, uniquely shaped, and intricate projects. Featuring a ceramic-coated heat plate, it glides effortlessly over surfaces like baby shoes, hats, and stuffed animals, ensuring even, edge-to-edge heat distribution. With three adjustable temperature settings and a compact, ergonomic design, it is an ideal tool for crafters needing precision in tight or hard-to-reach areas.

## Performance & Features

### Temperature Settings

**140 °C**  
Low

**170 °C**  
Medium

**200 °C**  
High

### Key Features

Ceramic-coated plate, Auto-shutoff, Portable, Ergonomic handle, Quick heat-up

## Technical Specifications

Dimensions (L x W x H)	87 x 54 x 103 mm
Heat Plate Size	48 x 83 mm
Weight	390 g
Power Consumption	200 W
Power Cord Length	1.5 m
Ready Time	60 s

## Safety & Automation

### Safety & Automation

- Auto-shutoff after 13 minutes of inactivity
- Auto-timer alert after 25 seconds
- Insulated safety base
- Audible buzzer for status updates

## Usage Guide

### Temperature Usage Guide

Setting	Temperature Range	Recommended Use
Low	125°C - 145°C	Sensitive base materials
Medium	150°C - 180°C	Standard base materials
High	185°C - 205°C	Infusible Ink & heavy-duty materials