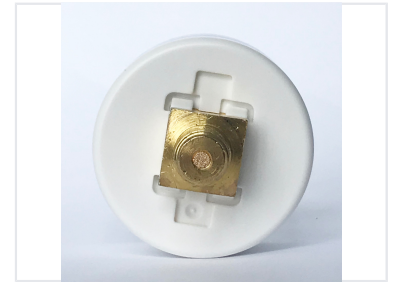
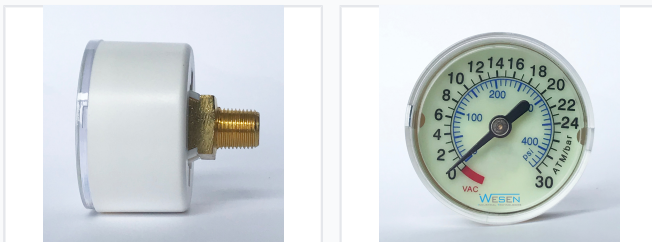


# Medical Pressure Measurement Gauge

This medical pressure gauge accurately measures pressure in medical applications. It features a clear dial with dual scales and a robust construction for reliability.



## ADDITIONAL IMAGES



## Product Overview

### Precision Medical Pressure Measurement

This medical-grade pressure measurement gauge is engineered for high-accuracy monitoring in critical healthcare environments. Designed with robust materials like stainless steel and tempered glass, it ensures reliability and longevity under demanding conditions. The versatile configuration options, including various mounting styles and pressure ranges, make it suitable for a wide array of medical devices and systems.

## Physical Dimensions & Construction

### Available Dial Sizes

- 1.5"
- 2"
- 2.5"
- 3.5"
- 4"
- 5"
- 6"
- 8"
- 10"

### Case Materials

SS304, SS316, Black Steel, Plastic

### Window Options

Glass, Tempered Glass, Safety Glass, PC Glass, Acrylic

## Performance & Technical

### Internal Liquid

Glycerin • Silicone Oil

### Gauge Type

Liquid Filled • Dry Type

### Pressure Range

-1 to 1000 bar

## Installation & Mounting

### Mounting Styles

- Bottom
- Back
- Lower Back

### Thread Standards

PT, NPT, G

## Materials & Components

### Internal Material Composition

Component	Material Options
Movement	SS304 / Brass
Connection	SS316 / SS304 / Brass
Bourdon Tube	SS316 / Phosphor Bronze