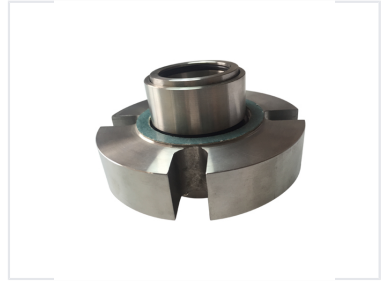
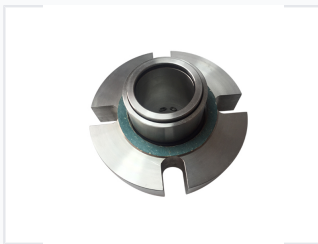


## Mechanical Cartridge Seal for Water Pumps

This mechanical cartridge seal is designed for water pump applications. It provides a reliable sealing solution, preventing leaks and ensuring optimal pump performance.



### ADDITIONAL IMAGES



### Product Overview

**Product photo**

Precision-engineered mechanical seal for water pump applications.

#### High-Performance Mechanical Cartridge Seal

This mechanical cartridge seal is engineered for front water pump applications, providing a reliable and leak-free solution for demanding industrial and automotive environments. The design focuses on wear resistance, low friction, and easy replacement, ensuring minimal downtime and optimal pump efficiency. Manufactured with precision, this component is suitable for a wide range of water pump systems.

## Technical Specifications



Robust design ensures reliability in demanding environments.

Model Number	HF-J318A
Nominal Size	35 mm
Material Composition	ca/sic/nbr

## Performance Metrics

### Pressure Range

**0 Mpa**

Min Pressure

**2 Mpa**

Max Pressure

### Speed Rating

**3000 rpm**

Max Speed

## Logistics



Standardized rust-proof packaging for secure transit.

Weight per unit	0.015 kg
-----------------	----------

## Key Features

Key Advantages	Wear resistant, Superior sealing, Low friction, Easy replacement, Customizable mold
----------------	---

## Application

### Target Applications

- Automotive water pumps
- Construction machinery
- General industrial pumps