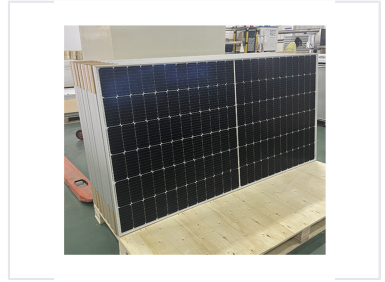
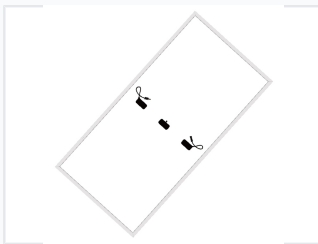


MBB Half-Cut Monocrystalline Solar Panel

This monocrystalline solar panel uses MBB and half-cut cell technology for enhanced power. It is available in 166mm or 158mm silicon wafers for exceptional performance in residential, commercial, and utility-scale applications.



ADDITIONAL IMAGES



Overview

High-Efficiency MBB Half-Cut Module

This monocrystalline solar panel utilizes advanced Multi-Busbar (MBB) and half-cut cell technology to maximize energy conversion efficiency. By optimizing the gate line design, the module reduces shading area and resistance loss, leading to improved long-term generation performance. Designed for residential, commercial, and utility-scale applications, this panel offers increased power output and superior reliability in various environmental conditions.

Technical Specifications

Available Wafer Sizes

- 166mm
- 158mm

Cell Technology

Monocrystalline, MBB (Multi-Busbar), Half-Cut Cell

Performance Metrics

Efficiency Increase

2.5 %

Module Efficiency Gain

3 %

Opaque Area Reduction

Power Output Increase

10 W

Design Features

Key Design Benefits

9-Gate Line Design • Reduced Resistance Loss • Improved Shading Tolerance • Lower Operating Temperature