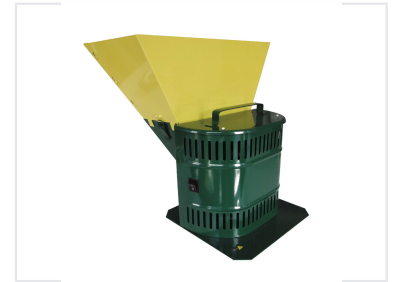


Material Grinding Crusher

This grinding crusher is a robust and efficient machine designed for processing various materials. Its durable construction includes a yellow hopper for easy feeding, a green body with ventilation slots, an integrated switch, and a sturdy base.



Overview

Robust Material Grinding Solution

The Material Grinding Crusher is a reliable and efficient machine engineered for processing a variety of materials. Built with a durable metal construction, it features a yellow hopper for streamlined material feeding and a green body equipped with ventilation slots to ensure effective motor cooling during operation. Designed for stability and ease of use, this crusher is suitable for both professional and home applications.

Design & Construction

Construction Material	Durable metal
Color Scheme	Yellow hopper, Green body
Cooling System	Yes

Operational Features

Application Suitability Professional Use • Home Use	
Control	Integrated switch