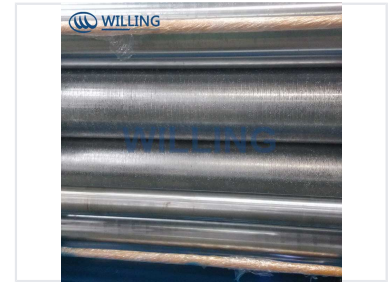


Material Embossing Machine with Adjustable Settings

This embossing machine is designed for imprinting patterns onto various materials. It features adjustable settings for precise pattern depth and alignment.



ADDITIONAL IMAGES



Overview

Industrial Embossing Solution

This material embossing machine is engineered for high-precision imprinting on steel, aluminum, and stainless metal sheets, as well as particle boards and decorative materials. Featuring a robust construction and adjustable settings, it delivers clear, high-definition patterns with strong three-dimensional effects. Designed for industrial efficiency, it supports bidirectional operation and is built for consistent, high-quality output.

Technical Specifications

Working Speed

10 m/min
Min Speed

15 m/min
Max Speed

Roller Specifications

Feature	Specification
Material	Cr12MoV
Diameter	1350mm
Max Width	1300mm

Compatible Materials

Steel, Aluminum, Stainless Steel, Particle Board, Decorative Materials

Machine Dimensions & Power

Power Requirements

- Main motor power: 2.2kw
- Voltage: 380V
- Phase: 3-phase
- Frequency: 50Hz

Machine Dimensions	1700mm x 1300mm x 1500mm
--------------------	--------------------------

Total Weight	3500 kg
--------------	---------

Operational Details

Run Direction

Both directions

Material Thickness Range	0.35-0.4mm
--------------------------	------------