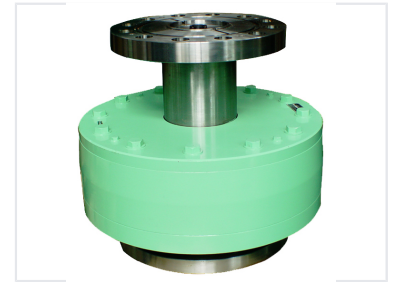


# Marine Elastic Damping Coupling

This elastic damping coupling is designed for marine applications, providing vibration isolation and shock absorption. It features a robust construction connecting two flanged components, secured with bolts, and is suitable for connecting rotating machinery in marine environments.



## Product Overview

### Professional Marine Elastic Damping Coupling

This high-performance marine elastic damping coupling is expertly engineered to provide superior vibration isolation and shock absorption for heavy-duty marine rotating machinery. Its robust construction ensures reliable power transmission while significantly reducing operational noise levels. By effectively dampening mechanical vibrations, this coupling helps protect interconnected equipment and extends the overall service life of the propulsion system.

## Technical Specifications

### Design Features

- Robust multi-bolt flanged connection
- Central shaft drive design
- Engineered for shock absorption
- High-durability marine-grade construction
- Vibration isolation housing

### Primary Applications

Marine Propulsion, Rotating Machinery, Damping Systems

### Surface Finish

Protective light green industrial paint