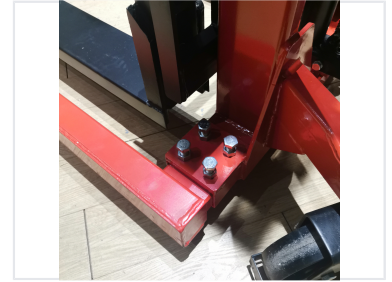
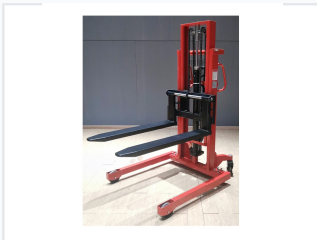


Manual Wide Leg Stacker

This wide leg manual stacker is designed for lifting, carrying, loading, and unloading materials in agricultural and industrial settings. Its manual operation ensures ease of use and precise control, making it ideal for environments where power sources are limited or unavailable.



ADDITIONAL IMAGES



Product Overview

Manual Wide Leg Stacker

The Manual Wide Leg Stacker is a robust material handling solution designed for diverse agricultural and industrial applications. Its wide leg configuration offers exceptional stability and load distribution, allowing for safer maneuvering of bulky items. Featuring a reliable manual hydraulic lifting mechanism, this stacker provides precise control without the need for an external power source.

Technical Features

Frame Material	Robust Steel
Operation Type	Manual Hydraulic
Safety Equipment	Foot-operated parking brake, Overload protection valve

Application & Design

Adjustable Components

- Adjustable forks for varying pallet sizes
- Wide leg design for obstacle maneuverability

Usage Environment

Warehouse • Workshop • Agricultural settings • Industrial sites