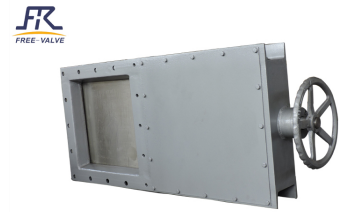


Manual Square Port Knife Gate Valve

This knife gate valve features a square port and is operated manually. The valve is constructed from carbon steel and designed for industrial applications requiring reliable shut-off and flow control.



ADDITIONAL IMAGES



Product Overview

Manual Square Port Knife Gate Valve

This manual square port knife gate valve is designed for reliable flow control and shut-off in demanding industrial pipelines. Featuring a durable square board opening and closing element, it efficiently manages powders, grains, and small particle materials. Its robust construction makes it an ideal solution for industries such as metallurgy, mining, power, and chemical processing.

Technical Specifications

Applicable Temperature

0 °C

Min Temp

120 °C

Max Temp

Size Range

DN200xDN200 to DN1200xDN1200

Pressure Range

Class 150, PN6, PN10

Construction & Materials

Body Material

- Carbon steel
- Stainless steel

Disc Material

- Stainless steel
- Carbon steel

Sealing Material

- Rubber
- Metal seal

Operational Details

Operating Mode

Hand wheel • Bevel Gear • Pneumatic

Connection Type

Square flange

Model

FRZ341H