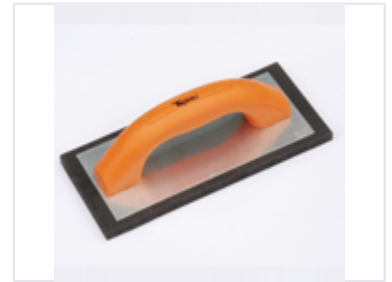


Manual Plastering Trowel with Stainless Steel Blade

This manual trowel is designed for applying and smoothing soft materials. It features a stainless steel blade and a durable plastic handle, ideal for plastering and rendering.



Product Overview

Professional Manual Plastering Trowel

The Manual Plastering Trowel is a high-quality manual tool engineered for precision applying and smoothing of soft materials. Featuring a robust stainless steel blade, this tool ensures consistent surface distribution for plastering, rendering, and various finishing applications. Its ergonomic design is specifically crafted to minimize user fatigue during extended professional use.

Physical Dimensions

Blade Dimensions

250 mm

Length

100 mm

Width

Total Weight

300 g

Technical Features

Blade Material	Corrosion-resistant stainless steel
Handle Material	Durable plastic
Key Attributes	Corrosion Resistant, Ergonomic Design, Easy to Clean, Manual Control