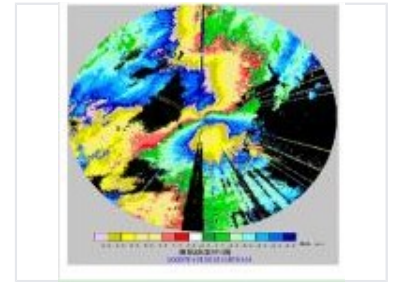


# Machine Tool Equipment

Machine tool equipment is used for shaping or machining metal or other rigid materials. They are essential in manufacturing for creating precision parts.



## Product Overview

### Precision Monitoring Equipment

This advanced monitoring unit is designed for high-accuracy environmental data collection. It features specialized radar capabilities for tracking precipitation intensity and distribution patterns. Built for professional applications, it provides critical insights into weather conditions at specific altitudes, ensuring reliable data for operational decision-making.

## Technical Capabilities

Measurement Unit	mm/hr
Reference Altitude	1000 m
Measurement Type	Reflectivity
Classification Standard	Precipitation Intensity, Spatial Distribution, Reflectivity Mapping