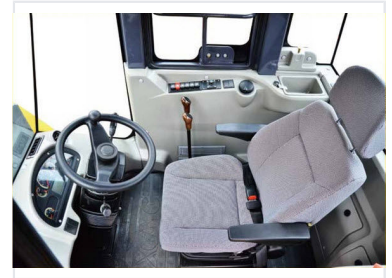


# LW500FN Wheel Loader

The LW500FN wheel loader is designed for efficiency and energy savings in engineering constructions, aggregate yards, and coal logistics. This loader offers advantages in material handling with its powerful engine and responsive hydraulic system.



## ADDITIONAL IMAGES



## Product Overview

### Built for Heavy-Duty Performance

The LW500FN wheel loader is a high-performance machine engineered for demanding construction, mining, and earthmoving applications. Featuring a robust design and a high-torque engine, it delivers exceptional breakout force and material handling efficiency. Its ergonomic cabin is designed to maximize operator comfort and visibility, ensuring sustained productivity throughout long work shifts.

## Performance Metrics

### Rated Load

**5 ton**

Rated Load Capacity

### Bucket Capacity

2.5 - 4.5 m<sup>3</sup>

### Operating Weight

16.9 - 17 ton

## Technical Configuration

### Engine Power

162 kW

### Drivetrain

Dry Drive Axle, Planetary Gearbox

## Operator Environment

### Cabin Comforts

- Ergonomic cabin design
- Excellent visibility
- Adjustable seat with armrest
- Intuitive dashboard controls