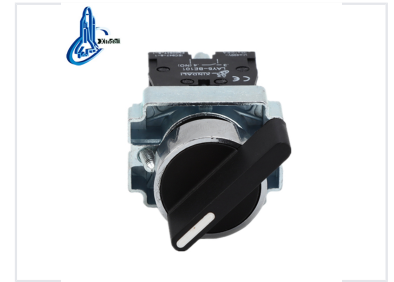


Long Handle 3-Position Pushbutton Switch

This pushbutton switch features a long handle and three positions for versatile control. It is designed for use in electrical systems requiring reliable switching.



ADDITIONAL IMAGES



Product Overview

Industrial 3-Position Selector Switch

This robust 3-position selector switch features a long handle design for enhanced leverage and precise manual control. Engineered for demanding industrial environments, it utilizes a high-grade anti-flam plastic and zinc alloy construction with silver alloy contacts for superior electrical erosion resistance. It is fully compliant with international safety standards including IEC60947-5-1 and CE, making it a reliable solution for control panels, machinery, and power distribution systems.

Technical Specifications



Specializing in production of buttons and indicators since 1997

Detailed view of the contact configuration, showing terminal labeling for easy electrical integration.

Operational Metrics Table

Parameter	Value
Lamp Brightness	60cd/m ²
Continuous Working Life	100,000h
Switch Positions	3

Rated Insulation Voltage 600 V

Conventional Heating Current 10 A

Insulation Resistance e5M Ω

Contact Resistance d25m Ω

PF Withstand Voltage AC 2.5KV/min

Voltage Wave Tolerance \pm 20%

Durability & Lifecycle

Mechanical Life

500000 cycles

Selector Switch Cycles

Electrical Life

250000 cycles

Selector Switch Cycles

Physical Dimensions

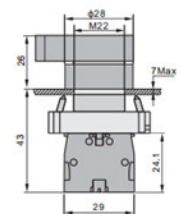


LAY5-BJ33

Long handle

N/O+N/O  3 Position stay put LAY5-BJ33

N/O+N/O  3 Position spring return LAY5-BJ53



Dimensional drawing for the M22 mounting standard, illustrating the 3-position selector mechanism.

Mounting Hole Diameter 22 mm

Maximum Panel Thickness 7 mm

Compliance & Certification

Certifications

CE, ISO 9001, RoHS, UL, IEC60947-5-1