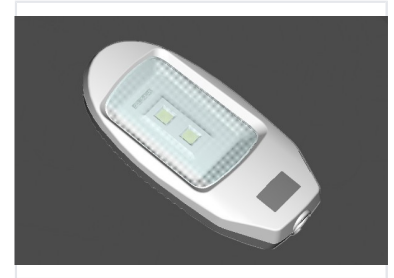


LED Street Light for Public and Residential Areas

This LED street light is designed for optimal illumination and energy savings. Its durable, weather-resistant housing and high-performance LED array ensure long-lasting and reliable operation.



Overview

High-Efficiency LED Street Lighting Solution

This high-efficiency LED street light is engineered for optimal illumination and significant energy savings in public and residential environments. Featuring a durable, weather-resistant housing, it ensures long-lasting and reliable operation under various outdoor conditions. It is an ideal lighting solution for residential streets, parking lots, and public walkways.

Technical Specifications

Key Design Features

- High-performance LED array
- Weather-resistant housing
- Energy-efficient design
- Durable construction

Model Number	PE20-50AR
Recommended Applications	Residential Streets, Parking Lots, Public Areas, Walkways