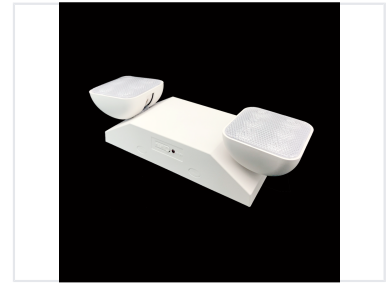


LED Emergency Light with Adjustable Lamp Heads

This UL Listed LED emergency light provides reliable illumination during power outages. Featuring two adjustable LED lamp heads with high-performance reflectors, it ensures optimal light distribution.



ADDITIONAL IMAGES



Product Overview

Professional Emergency Lighting Solution

This LED emergency light provides dependable illumination during critical power failures. Constructed with a high-durability, flame-resistant thermoplastic ABS housing, it is engineered to meet rigorous safety requirements. The unit features dual adjustable lamp heads for optimized coverage and a reliable, long-lasting nickel-cadmium battery system.

Technical Specifications

Performance Metrics

120 V

Input Voltage

90 min

Discharge Duration

24 h

Charge Time

Power Rating

1 W

Construction & Design

Dimensions

339.5 x 115 x 94.8 mm

Housing Material

Injection-molded thermoplastic ABS

Compliance & Safety

Certifications & Ratings

UL-94V-0, Fire-Resistant

Temperature Range

0°C to 40°C

Battery System

Battery Type

3.6V Nickel Cadmium