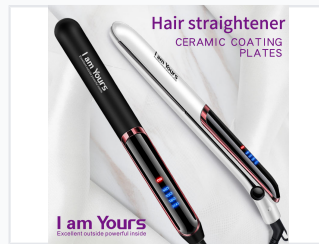


# LED Display Ceramic Hair Straightener

This hair straightener features ceramic-coated plates and an LED display for adjustable temperature settings. It heats up quickly and maintains consistent heat for efficient hair styling.



## ADDITIONAL IMAGES

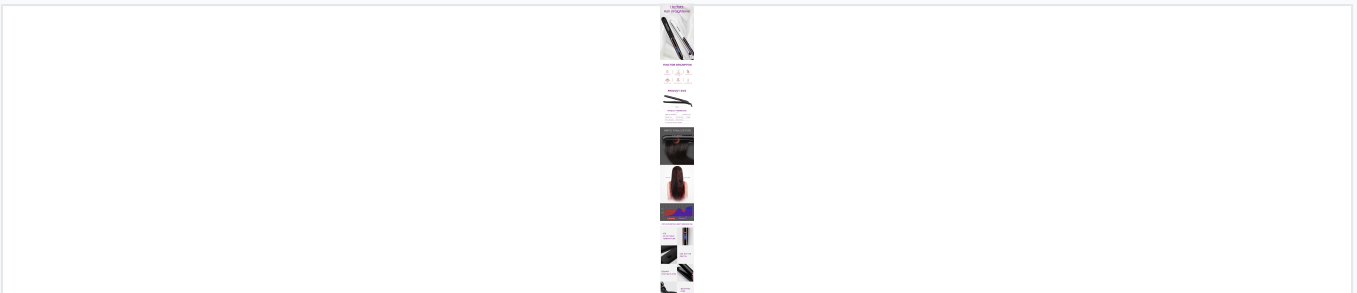


## Product Overview

### Professional Performance Hair Straightener

This slim hair straightener is engineered for rapid heating and precise temperature control, making it ideal for various hair types. Featuring ceramic-coated plates, it ensures smooth gliding and even heat distribution to minimize potential hair damage during styling. With an integrated LED display and multiple heat settings, users can achieve consistent, salon-quality results with ease.

## Technical Specifications



Product specifications and design features including ceramic plates and swivel cord.

Power Rating	35 W
Voltage Range	220V-240V
Frequency	50 Hz
Heating Technology	PTC Quick Heat-up
Total Length	33 cm

## Performance Features

### Temperature Settings

- 140
- 160
- 180
- 200

### Interface

LCD Display

### Plate Material

Ceramic Coating

### Key Functionalities

PTC Heating, 360-degree Swivel Cord, Adjustable Temperature, On/Off Switch