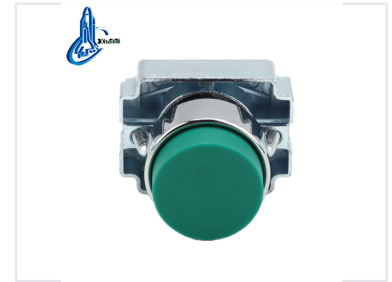


# Latching Push Button Switch with Convex Head

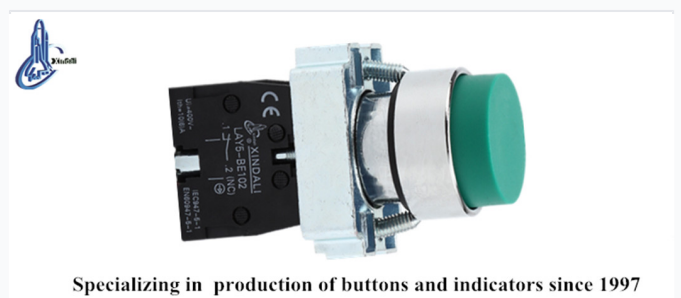
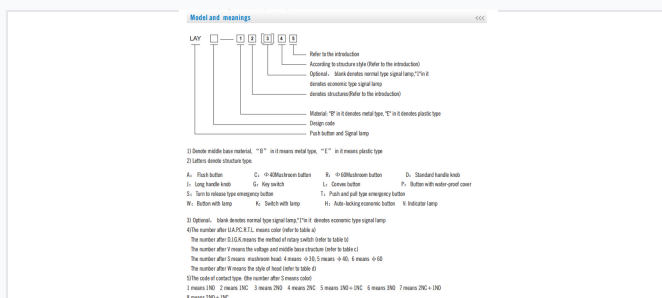
This electrical switch features a spring convex head and a latching push button mechanism. It is designed for use in controlling circuits with AC voltage up to 660V and DC voltage below 400V.



## ADDITIONAL IMAGES



## Product Overview



Specializing in production of buttons and indicators since 1997

Modular design guide explaining model codes, contact types, and structural options.

The standard convex-headed latching push button designed for industrial control.

## Industrial Latching Push Button

The LAY5-BL31 is a robust latching push button switch engineered for demanding industrial control applications. Featuring a distinct convex head design, it is constructed from high-grade anti-flam plastic and zinc alloy to ensure long-term durability and resistance to electrical erosion. This switch is designed for seamless integration into control panels, machinery, and power distribution systems.


## Electrical Specifications

Rated Insulation Voltage	600 V
Conventional Heating Current	10 A
Insulation Resistance	e5M $\odot$
Contact Resistance	d25n $\odot$
Power Frequency Withstand Voltage	AC 2.5KV/min

## Performance Metrics

Mechanical Life (Pushbutton)	1000000
Electrical Life (Pushbutton)	500000
Continuous Working Life	100000 h


## Dimensions and Mounting




LAY5-BL31

Convex button  
Spring return

N/O

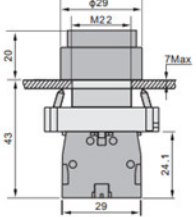


N/C



● Black  
● Green  
● Yellow  
● Blue  
  
● Red

LAY5-BL21  
LAY5-BL31  
LAY5-BL51  
LAY5-BL61  
  
LAY5-BL42



Dimensional specifications and mounting requirements for the LAY5 series.

### Dimensions

Dimension	Value
Total Height	43mm
Height above surface	20mm
Base Size	29mm x 29mm

Mounting Hole Diameter 22 mm

Max Panel Thickness 7 mm

## Compliance and Standards

### Standards Compliance

- GB/T14048.1
- IEC60947-5-1

Certifications CE, ISO 9001, RoHS, UL