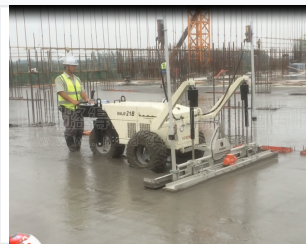


# Laser Concrete Screed

The Laser Screed is used for concrete construction in large areas like industrial workshops, markets, and airports. It satisfies construction requirements for large area coverage, high planeness, and levelness.



## ADDITIONAL IMAGES



## Overview

### Precision Concrete Leveling

The Laser Concrete Screed is an advanced leveling machine engineered for high-precision floor preparation in large-scale construction projects. Utilizing automated laser technology, it ensures perfectly flat surfaces for industrial floors, warehouses, and commercial slabs. By integrating vibrating screeding heads with self-propelled mobility, this equipment significantly reduces manual labor requirements while drastically improving the speed and quality of concrete finishing.

## Technical Specifications

Model Identifier	RWJP21B
Core Technologies	Laser-Guided Leveling, Automated System, Vibrating Screeding Head, Self-Propelled

## Performance Metrics

### Performance Highlights

<b>1 High</b> Leveling Precision	<b>100 %</b> Efficiency Improvement
-------------------------------------	--

## Application Areas

### Ideal Use Cases

- Large-scale concrete pours
- Warehouse flooring
- Industrial floor slabs
- Commercial building decks