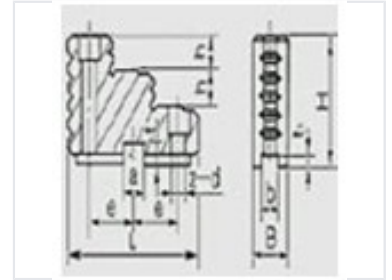


K11 Three-Jaw Self-Centering Chuck Jaws

These are precision-engineered K11 three-jaw self-centering chuck jaws designed for secure workpiece holding. The jaws are manufactured to exacting standards, ensuring optimal performance and longevity.



Product Overview

Precision Workpiece Holding

These K11 three-jaw self-centering chuck jaws are engineered for secure and accurate workpiece holding in demanding machining environments. Constructed from hardened steel, they offer superior durability and wear resistance for consistent, long-term performance. The precision-ground surfaces ensure repeatable clamping accuracy, making them an ideal choice for lathes, milling machines, and various industrial machine tools.

Technical Specifications

Suitable Applications

- Lathes
- Milling Machines
- General Machining Tools

Compatibility

Standard K11 chuck bodies

Material

Hardened Steel

Jaw Configuration

Three-Jaw Self-Centering

Key Features

Hardened Steel, Precision Ground, Self-Centering, Wear Resistant