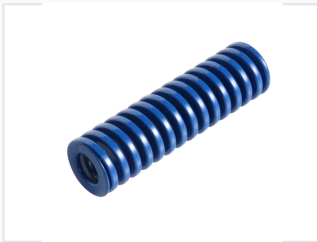


ISO10243 Mould Spring

This high-performance mould spring is manufactured according to ISO10243 standards. Designed for heavy-duty applications, it provides consistent and reliable performance in demanding environments.



ADDITIONAL IMAGES



Overview

High-Performance ISO10243 Mould Spring

This high-performance compression spring is engineered strictly according to ISO10243 standards, making it an ideal component for heavy-duty moulding machinery and industrial dies. Constructed from durable, high-quality spring steel with a rectangular wire cross-section, it offers superior fatigue resistance and increased load capacity. The design ensures uniform stress distribution and minimal compression set, providing consistent, reliable force for demanding injection moulding and die casting applications.

Technical Specifications

Standard Compliance

ISO 10243

Material

High-quality spring steel

Wire Cross-Section

Rectangular

Identification

Color-coded finish for load rating

Applications

Primary Applications

Injection Moulding, Die Casting, Heavy-duty Machinery, Industrial Dies

Performance Features

Performance Highlights

1 High

Fatigue Resistance

1 Uniform

Stress Distribution