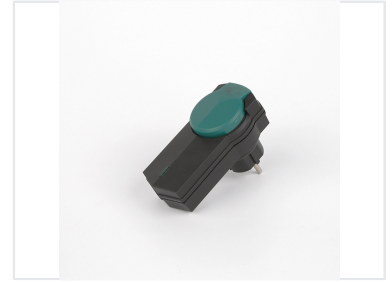


# IP44 Wireless Remote Control Socket

This IP44 wireless remote control socket allows for the remote operation of electrical devices. It is suitable for both indoor and outdoor use, providing control for lamps, appliances, and other equipment.



## ADDITIONAL IMAGES



## Product Overview

### Smart Remote Control Solution

This wireless remote control socket set offers a convenient and safe way to manage your electrical appliances remotely. Featuring an IP44-rated design with shutter protection, it is suitable for both indoor and outdoor environments. The system includes one transmitter and two receivers, providing reliable on/off control for your connected devices with a transmission range of up to 30 meters.

## Technical Specifications

### Electrical Ratings

**230 V**  
Voltage

**10 A**  
Rated Current

**2300 W**  
Max Power

### Wireless Connectivity

- Frequency: 433.92MHz
- Transmission Range: 30 meters (open area)
- Learning code technology

## Design & Build

### Protection Rating

IP44 • Shutter Included

### Kit Contents

Component	Quantity
Transmitter	1
Receivers	2

## Power & Battery

Battery Type	3V CR2032
Battery Included	Yes