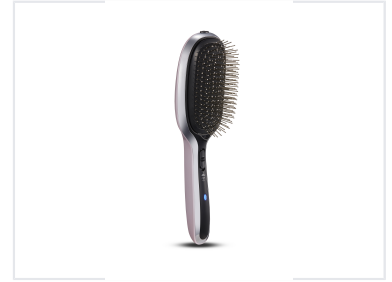


Ionic Hairbrush with 3D Bristles

This advanced ionic hairbrush is designed for detangling, smoothing, and adding shine to hair. Its 3D bristles gently massage the scalp and distribute natural oils, while integrated ion technology reduces frizz and static.



Product Overview

Advanced Ionic Hairbrush Technology

This advanced ionic hairbrush is designed to enhance hair health by combining 3D bristle technology with active ion output. It effectively detangles, smooths, and adds shine while gently massaging the scalp to distribute natural oils. The device is engineered for convenience and safety, featuring an ergonomic design and an automatic shut-off function.

Technical Specifications

Ionic Output

6 million
Ionic Output

Power Supply	3V (2x AAA batteries)
Auto Shut-off Timer	4 minutes

Features

Key Features

- 3D Bristle Technology
- Vibration Massage Function
- Removable Bristle Pad for Easy Cleaning

Technology Type	Ionic, Massage, Detangling
-----------------	----------------------------