

Intelligent Passive Electronic Padlock

This electronic padlock features stainless steel cylinder parts and records every unlocking event. Designed for diverse environments, it requires no power supply, wiring, or maintenance.



ADDITIONAL IMAGES



Overview



Passive technology eliminates the need for wiring or internal power supplies.

Intelligent Passive Electronic Padlock

This advanced security solution combines a robust stainless steel and copper physical build with artificial intelligence attributes for superior access control. Unlike traditional mechanical locks, it requires no power supply or wiring, making it a maintenance-free choice for remote or harsh environments. Every unlocking event is recorded, providing a complete audit trail for professional security management.

Key Features



Simple operation

These locks are simplicity of operator and easy to install which could reduce your work.

Designed for simple operation and easy installation to reduce onsite workload.



Two-way Identity Authentication

This two-way identity authentication scheme effectively prevents imitate unlocking. And the security of authentication system is enhanced.

Advanced two-way authentication prevents imitation unlocking and enhances system security.

Core Benefits

- Passive electronic technology (no internal battery required)
- Zero wiring and maintenance-free operation
- Comprehensive unlocking event logging
- Two-way identity authentication to prevent unauthorized access
- High-strength resistance to drilling, sawing, and knocking

Technical Specifications

Performance Metrics

10 years

Service Life

68 IP

Protection Level

Operating Environment

Parameter	Range
Working Temperature	-40°C to 70°C
Humidity	20% to 97%

Material & Construction

Intelligent Passive Transverse Padlock

Intelligent lock core is embedded in horizontal padlock. Stainless steel lock beam and full copper lock body, high strength, suitable for harsh environment, anti-drilling, sawing, knocking and corrosion resistance. Suitable for wide locks. Cannot be opened technically and is easy to manage.

WM-2000B-HCS

Materials: The locking beam is made of stainless steel, the lock body is made of copper, and the fastening screw is made of steel
 Surface Treatment: Matte
 Working Environment: Temperature(-40°~70°C)
 Humidity (20%~97%)
 Service life: 10 years
 Protection level: IP68



Heavy-duty construction featuring a copper body and stainless steel beam for harsh environments.

Construction Materials

Component	Material
Locking Beam	Stainless Steel
Lock Body	Full Copper
Fastening Screw	Steel
Cylinder Parts	Stainless Steel
Surface Treatment	Matte

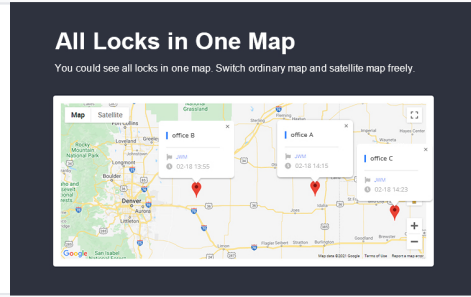
Management System



Define User Permissions by your Own

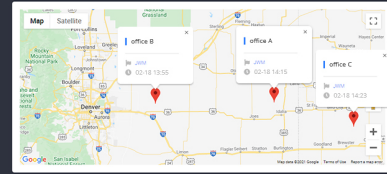
You could add many login accounts and assign them different permissions for different workers. No more worrying about workers change records.

Granular access control allows administrators to define specific permissions for different workers.



All Locks in One Map

You could see all locks in one map. Switch ordinary map and satellite map freely.



Monitor all lock locations and access events in real-time via a centralized map interface.

Software Capabilities

User Permission Management, Centralized Map View, Satellite Map Integration, Customizable Interface, Audit Trails, Password Recovery Function

Durability

Applications Scenarios

Suitable for harsh environment, drill proof, saw proof, knock proof, corrosion resistant. It could be used in transportation industry and so on.



Ideal for transportation and industrial sectors requiring robust physical protection.

Resistance Ratings

Drill Proof • Saw Proof • Knock Proof • Corrosion Resistant • Anti-Technical Opening