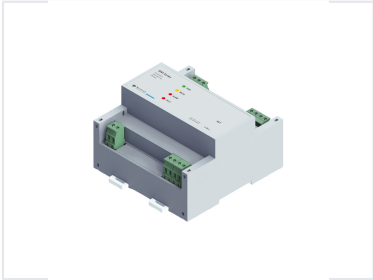
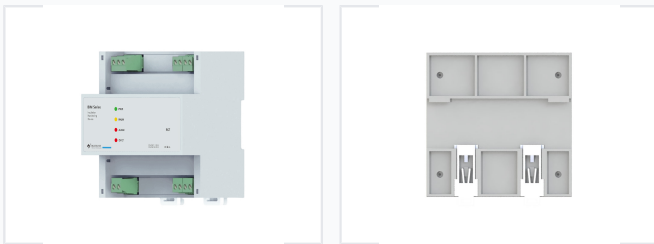


# Insulation Resistance Monitoring Device for AC/DC Systems

This device monitors the insulation resistance of unearthed AC/DC systems up to 1000Vac/dc. When the value falls below preset response values, alarm LEDs light up, with support for two adjustable response values to differentiate between pre-alarm and alarm.



## ADDITIONAL IMAGES



## Overview

### Advanced Insulation Monitoring

The BIM-M1000 is a high-precision insulation monitoring device designed for ungrounded AC/DC IT systems. It ensures operational safety by continuously tracking insulation resistance and detecting faults in battery energy storage, electric vehicles, and DC charging stations. Compliant with international IEC standards, it offers robust communication capabilities and configurable alarm signaling for seamless system integration.

## Standards & Compliance

### Compliance Standards

IEC 61557-1:2018, IEC 61557-8:2018

## Technical Specifications

### Measurement Range

- 100 kΩ to 1 MΩ (Y = 0.5)
- 1 MΩ to 50 MΩ (Y = 0.7)

### System Compatibility

AC IT Systems • DC IT Systems • Battery Energy Storage • Electric Vehicles • DC Charging Stations

### Max System Y Capacitance

4 F

## Communication & Alarms

### Alarm Signaling

- LED Indicators
- Alarm Relays

### Alarm Features

Overvoltage Alarm • Two Configurable Response Values

### Communication Interfaces

RS485, CAN Bus

## Performance Data

### Stabilization Performance

Condition	Time
IRz < 500 kΩ = 0%	5
IRz = 1MΩ = 1%	8
IRz = 1MΩ = 2%	12