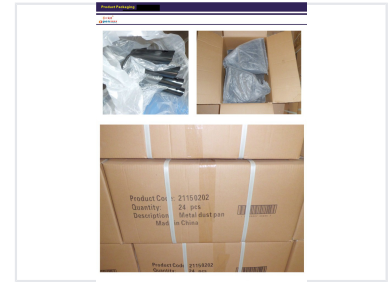
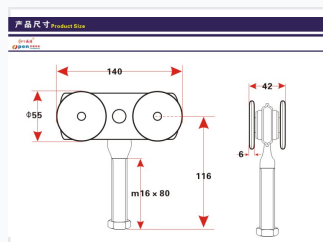


Industrial Steel Dustpan Trolley with Adjustable Height

This industrial dustpan trolley is constructed from durable steel 1045. It features single or double bearings, V O Y U-grooves, and a zinc or color zinc or galvanized treatment, with a loading capacity of 450 kgs.



ADDITIONAL IMAGES



huang@loetc.com



Product Overview

Industrial-Grade Steel Trolley

This industrial steel trolley is engineered for heavy-duty applications, featuring a robust construction capable of supporting loads up to 450 kg. Designed for versatility, it includes adjustable height mechanisms and is compatible with various track or rail systems. Its durable build ensures reliable performance in demanding industrial environments.

Technical Specifications

Loading Capacity

450 kg

Max Load

| | |
|-----------------------|--|
| Material | Steel 1045 |
| Bearing Configuration | Single or Double Bearing |
| Groove Profile | V-Groove, O-Groove, Y-Groove, U-Groove |
| Surface Treatment | Zinc Plated, Color Zinc, Galvanized |

Dimensions

Technical Dimensions

| Parameter | Value | Unit |
|----------------|-------|------|
| Wheel Diameter | 55 | mm |
| Overall Length | 140 | mm |
| Width | 42 | mm |
| Stem Height | 116 | mm |

Packaging

Packaging Details

- Product Code: 21150202
- Quantity per package: 24 pieces