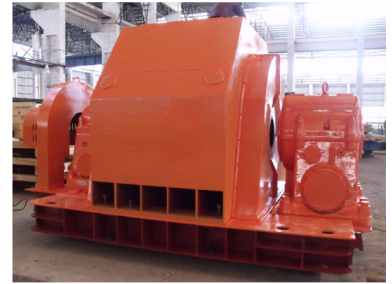


# Industrial Power Generator

This heavy-duty industrial generator is designed for power transmission and distribution applications. It features a robust construction with a cooling system and a sturdy base for stable installation, making it suitable for continuous operation in demanding industrial environments.



## Overview

### Industrial Power Generation Solution

This heavy-duty industrial generator is engineered for reliable power transmission and distribution in demanding environments. Its robust construction and integrated cooling system ensure stable, continuous operation for critical infrastructure. Designed with a sturdy base for secure installation, this unit is suitable for professional applications requiring consistent and durable power output.

## Technical Specifications

### Operational Status

Refurbished • Maintenance Ready

### Construction Features

- Large protective enclosure
- Integrated cooling system
- Sturdy installation base
- Stator and rotor housing

### Primary Application

Power Transmission, Power Distribution, Industrial