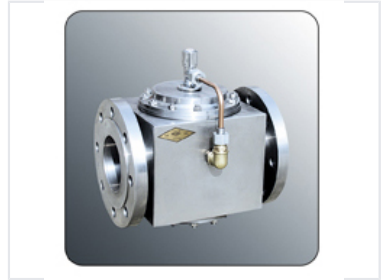


# Industrial Pipeline Gate Valve

This gate valve is designed to control fluid flow in pipelines. It features a robust construction with flanged connections for secure installation.



## Product Overview

### Industrial Pipeline Gate Valve

This industrial gate valve is specifically engineered for precise fluid flow control within demanding pipeline systems. Featuring a robust design with secure flanged connections, it ensures reliable on/off functionality for both liquid and gas applications. Built from high-durability materials, this valve is optimized to withstand significant pressure and temperature variations while requiring minimal maintenance.

## Technical Specifications

### Key Performance Features

- Robust construction
- High-pressure resistance
- High-temperature tolerance
- Reliable on/off control
- Low maintenance requirements

<b>Connection Type</b>	Flanged
<b>Application Suitability</b>	Liquid Flow Control, Gas Flow Control, Industrial Pipelines