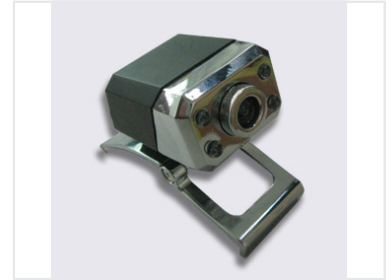


# Industrial Part Forming Mould

This is a precision-engineered mould designed for industrial applications. Constructed from high-quality materials, it ensures durability and consistent performance.



## Product Overview

### Precision Industrial Forming

This industrial part forming mould is a precision-engineered component designed for high-performance manufacturing environments. Built with a robust frame and a finely machined cavity, it ensures consistent part formation and long-term durability. Its compact design facilitates seamless integration into existing production machinery, making it a versatile solution for various material processing needs.

## Technical Specifications

### Compatibility

- Various material types
- Multiple production processes
- Easy machinery integration

### Build Quality

High-quality materials, Robust frame, Finely machined cavity

### Design

Compact