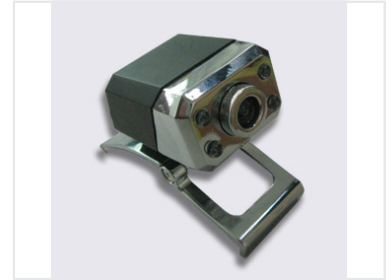


Industrial Mould Component

This precision-engineered mould component is designed for industrial machinery applications. It is constructed from durable materials to ensure longevity and consistent performance in high-demand manufacturing environments.



Product Overview

Precision Industrial Mould Component

This precision-engineered mould component is designed specifically for demanding industrial machinery applications. It is constructed from high-durability materials to ensure long-term reliability and consistent performance under high-stress manufacturing conditions. Featuring a compact design with a robust mounting bracket, it allows for secure and efficient integration into existing production systems.

Technical Details

Key Features

- Compact design
- Robust mounting bracket
- High-durability material construction

Application	Industrial Machinery, Moulding Processes
Finish	Polished