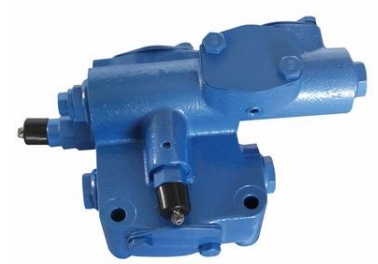


Hydraulic Exclusion Valve

This hydraulic exclusion valve diverts pump flow to the tank based on system pressure. It supplies oil to the hydraulic and steering systems while maintaining a low pressure drop.



Product Overview

Hydraulic Exclusion Valve PDV25

The PDV25 hydraulic exclusion valve is engineered to optimize hydraulic system efficiency by discharging excess flow during low-pressure, high-flow operations. It facilitates seamless oil supply to steering and hydraulic circuits with minimal pressure drop. Designed for robustness in agricultural and heavy machinery, it automatically redirects pump flow to the tank in response to system pressure changes.

Key Performance Metrics

Operating Parameters

20 MPa

Nominal Pressure

160 L/min

Nominal Flow Rate

1.1 MPa

Differential Control Pressure

Technical Specifications

- **Aplicaciones**
 - Pala cargadora
 - Excavadora/cargadora
 - Equipo para manejo de material

- **Parámetros**

| | |
|--|---|
| Presión nominal (MPa) | 20 |
| Caudal nominal (L/min) | 160 |
| Presión de control deferente (MPa) | 1.1 |
| Aceite hidráulico | Aceite mineral (HL, HLP) conforme con DIN 51 524 |
| Rango de temperatura de caudal (°C) | - 20-100 |
| Rango de viscosidad (mm ² /s) | 10-380 |
| Limpieza del fluido | No bajo que GB/T 14039-2002 nivel 19/16 o NAS 1638 nivel 10 |
| Peso aprox. (kg) | 10 |

Technical layout and operating parameters for the PDV25 valve model.

Fluid and Environmental Specs

| Parameter | Value |
|--------------------|--|
| Hydraulic Oil | Mineral oil (HL, HLP) per DIN 51 524 |
| Temperature Range | -20 to 100 °C |
| Viscosity Range | 10-380 mm ² /s |
| Fluid Cleanliness | GB/T 14039-2002 19/16 or NAS 1638 level 10 |
| Approximate Weight | 10 kg |

Applications

Target Applications

Wheel Loaders, Excavator/Loaders, Material Handling Equipment, Agricultural Irrigation Machinery