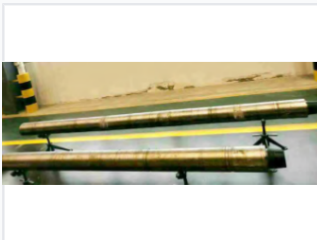


Hydraulic Drilling Power Promoter

This hydraulic drilling power promoter stabilizes drilling pressure, reduces vibration, and increases drilling speed. It provides accurate pressurization and even bit-feeding, solving the problem of applying drilling pressure in directional, large displacement, horizontal, and small borehole wells.



ADDITIONAL IMAGES



Overview

Hydraulic Drilling Power Promoter

The hydraulic drilling promoter is an essential tool designed to stabilize drilling pressure, reduce vibration, and increase overall drilling speed. By utilizing hydraulic pressurization, it provides accurate bit-feeding, effectively solving challenges associated with directional, large displacement, horizontal, and small borehole wells. This system improves well trajectory quality and enhances the stress-bearing status of the drill string, ultimately extending the operational life of the drilling bit.

Key Features

Key Benefits

Stabilizes Drilling Pressure, Reduces Bit Vibration, Increases Drilling Speed, Improves Well Trajectory, Extends Bit Life

Technical Specifications

Technical Parameters

| | | YZC122 | YZC172 | YZC197 | YZC244 |
|----------------------|-----------------|---------|---------|-----------|-----------|
| OD | mm | 122 | 172 | 197 | 244 |
| | in | 4 3/4 | 6 3/4 | 7 3/4 | 9 5/8 |
| Upper Connection | API | NC38 | NC50 | 6 5/8 REG | 7 5/8 REG |
| Bottom Connection | API | NC38 | NC50 | 6 5/8 REG | 7 5/8 REG |
| Length | m | 3.6 | 4.0 | 5.0 | 6.0 |
| | ft | 11.8 | 13.1 | 16.4 | 19.7 |
| Piston Area | cm ² | 140 | 265 | 380 | 450 |
| | in ² | 21.7 | 41.1 | 58.9 | 69.8 |
| Working Stroke | mm | 230 | 250 | 300 | 350 |
| | in | 7.87 | 9.84 | 11.81 | 13.78 |
| Piston Series | | 3 | 3 | 3 | 3 |
| Max. Working Tension | kN | 1,000 | 1,500 | 1,800 | 2,500 |
| | lb | 224,810 | 337,210 | 404,660 | 562,020 |
| Max. Working Torque | N·m | 10,000 | 25,000 | 35,000 | 40,000 |
| | ft·lb | 7,376 | 18,440 | 25,816 | 29,504 |

Note: Connection can be based on customer's requirement

Detailed technical specifications and dimension table for various hydraulic drilling promoter models.

Technical Parameters

| Model | OD (mm) | Length (m) | Max Tension (kN) | Max Torque (N·m) |
|--------|---------|------------|------------------|------------------|
| YZC122 | 122 | 3.6 | 1000 | 10000 |
| YZC172 | 172 | 4 | 1500 | 25000 |
| YZC197 | 197 | 5 | 1800 | 35000 |
| YZC244 | 244 | 6 | 2500 | 40000 |

Connection Standards

- NC38
- NC50
- 6 5/8 REG
- 7 5/8 REG

Customization

Connection types can be customized based on customer requirements.