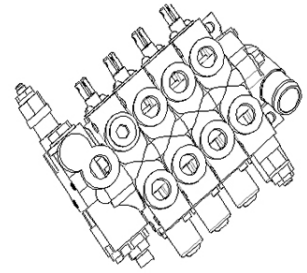


Hydraulic Directional Control Valve - 15mm, 63L/min



This sectional hydraulic directional control valve features a 15mm nominal diameter and a 63L/min nominal flow rate. It is designed for precise control over fluid direction and flow in hydraulic systems.

Overview

High-Performance Sectional Control Valve

The CDB2-F15 is a versatile sectional multiple directional control valve designed for precise fluid management in demanding hydraulic systems. Its modular construction includes inlet, working, and oil return sections, allowing for tailored configurations such as tilt self-locking and specialized lifting functions. Engineered for durability and reliability, it is an essential component for optimizing the performance of mobile and industrial machinery.

Key Performance Metrics

Key Performance Metrics

63 L/min

Nominal Flow Rate

200 bar

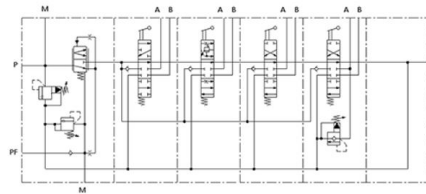
Nominal Pressure

15 mm

Nominal Diameter

Technical Specifications

Hydraulic circuit example



A typical hydraulic circuit example showcasing the integration of directional control valves with power units and actuators.

Valve Structure

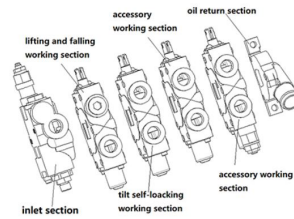
- Inlet section
- Lifting and falling working section
- Tilt self-locking working section
- Accessory working section
- Oil return section

Maximum Pressure	280 bar
Maximum Flow	80 L/min

Applications

Applications

The directional control valves are widely used for forklifts, excavators, agricultural machinery, small loaders, drilling equipment, logistics handling machinery, mining equipment, etc.



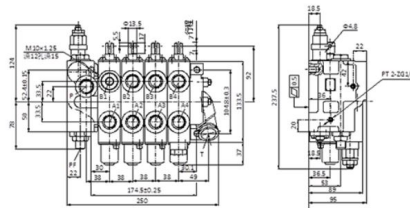
Overview of the valve's modular sections including inlet, working, and return sections, suitable for diverse industrial applications.

Suitable Machinery

Forklifts, Excavators, Agricultural Machinery, Small Loaders, Drilling Equipment, Logistics Handling, Mining Equipment

Installation & Dimensions

Typical hydraulic circuit and outside view: picture one



Detailed technical drawing showing port locations, section spacing (38mm), and overall length (250mm).

Mounting & Port Specifications

Feature	Specification
Threaded Connections	M10x1.25, M12x15, M14x1.5R14
Section Spacing	38mm
Port Identifiers	P, T, PF, A1-A4, B1-B4
Mounting Holes	2-Ø10.5 or Ø13.5