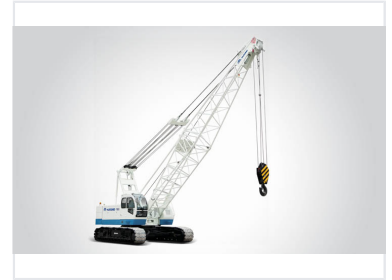


# Hydraulic Crawler Crane

This hydraulic crawler crane is designed for heavy lifting and construction tasks. Its robust crawler base provides stability on uneven terrain, while its long boom offers extended reach and high lifting capacity.



## Overview

### Heavy-Duty Hydraulic Crawler Crane

This high-performance hydraulic crawler crane is engineered for demanding construction and infrastructure projects. With a maximum lifting capacity of 125 tons and a versatile boom system reaching up to 73 meters, it offers exceptional reach and stability. The unit features a robust X-type base structure and a responsive hydraulic pilot proportional control system, ensuring precise operation and safety on uneven terrain.

#### Performance Highlights

**125 t**

Max Lifting Capacity

**115 t**

Machine Weight

**42 t**

Counterweight

## Performance

### Lifting Specifications

Feature	Range/Value
Boom Length	16 - 73 m
Jib (Vice Arm) Length	13 - 25 m
Working Radius	5 - 50 m
Max Lifting Torque	120 t·m

### Operating Speeds

- Main Hoist Speed: 75 m/min
- Auxiliary Hoist Speed: 50 m/min
- Boom Luffing Speed: 45 m/min
- Turning Speed: 1.65 r/min
- Walking Speed: 1 km/h

## Engine & Power

### Engine Details

Dongfeng Cummins 6 LTAA8.9-C295, 215 kW Power, 2100 RPM, 400 L Fuel Capacity

## Technical Features

### Design & Control

Hydraulic Pilot Control • X-Type Base Structure • Silicone Oil Shock Absorber • Free Fall Hook Function • Air Conditioning Standard