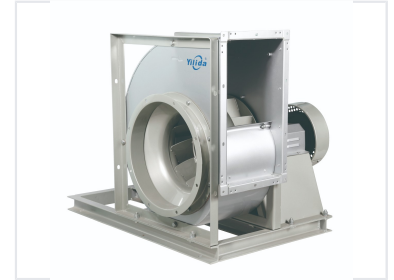


HVAC Centrifugal Fan

This centrifugal fan is designed for various HVAC&R applications. It features a durable construction with a sturdy frame and housing, ensuring long-lasting reliability and optimal airflow.



Product Overview

High-Performance Ventilation Solution

This backward-curved centrifugal fan is engineered for demanding industrial and commercial HVAC&R applications. Its robust design features a durable housing and a high-efficiency impeller, ensuring optimal airflow with minimized operational noise. The belt-driven architecture and external motor configuration facilitate excellent cooling and extended service life, making it a reliable choice for high-pressure and high-volume air movement requirements.

Performance Metrics

Key Performance Metrics

1400 mm

Maximum Impeller Diameter

120000 m3/h

Maximum Air Volume

3000 Pa

Maximum Static Pressure

Technical Specifications

Operational Ranges

Parameter	Range
Impeller Diameter	180 - 1400 mm
Air Volume	1000 - 120000 m3/h

Drive Configuration	Belt driven
Impeller Type	Single inlet backward curved

Key Features

Product Highlights

- Robust frame and housing for durability
- External motor design for efficient cooling
- Optimized for high static pressure applications
- Designed for ease of installation and maintenance