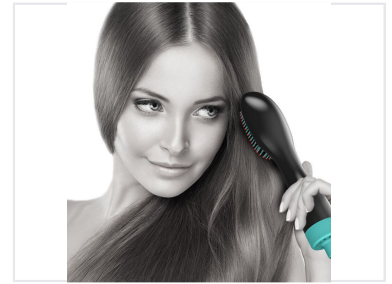
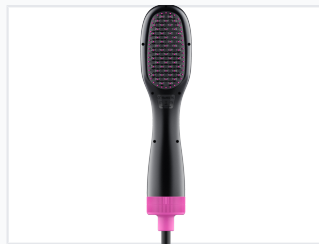
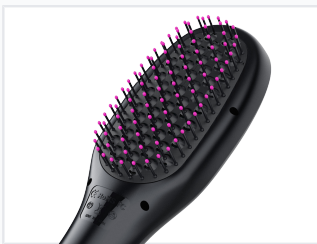


# Hot Air Styling Brush

This hot air styling brush combines the functionality of a hair dryer and styling brush. It is engineered to dry and style hair at the same time.



## ADDITIONAL IMAGES



## Product Overview

### Professional Styling Solution

This hot air styling brush combines the functionality of a hair dryer and a styling brush into one efficient device. It is designed to dry and style hair simultaneously, offering a convenient all-in-one solution for hair care routines. With multiple working levels, it provides versatile heat and speed settings to suit different styling needs.

## Performance & Settings

### Working Levels

- Low temperature with high speed wind
- High temperature with low speed wind
- High temperature with high speed wind

## Compliance & Standards

### Certifications

CE, RoHS, FC

## Manufacturing

### Country of Origin

China

## Design Features

### Key Features

Ergonomic handle • Multi-row bristles • Protective bristle tips