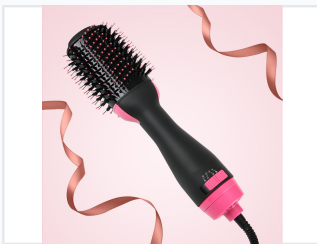


Hot Air Brush Styler with Multiple Settings

This hot air brush stycler combines a brush and heating element. It allows for simultaneous drying and shaping of hair with multiple heat and speed settings.



ADDITIONAL IMAGES



Product Overview

Professional Hot Air Brush Styler

This versatile hot air brush stycler is designed to streamline your hair care routine by combining drying and styling into a single step. Featuring a specialized barrel-shaped brush head with integrated bristles and airflow vents, it allows for efficient shaping and smoothing. With multiple heat and speed settings, users can customize their styling experience to achieve professional-looking results with ease.

Electrical Specifications

Power Output

1000 W

Minimum Power

1200 W

Maximum Power

Voltage

110/220 V

Frequency

50 Hz

Features

Heat Settings

3

Design Highlights

Tangle-free swivel cord, Combined drying and styling, Integrated airflow vents