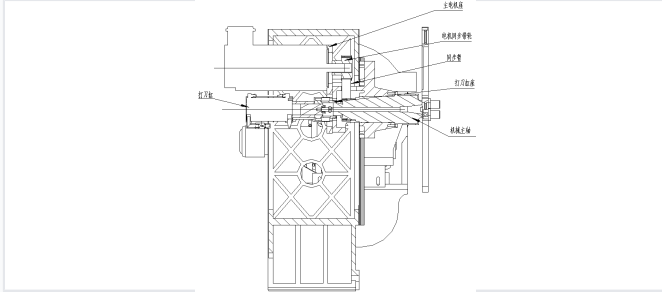




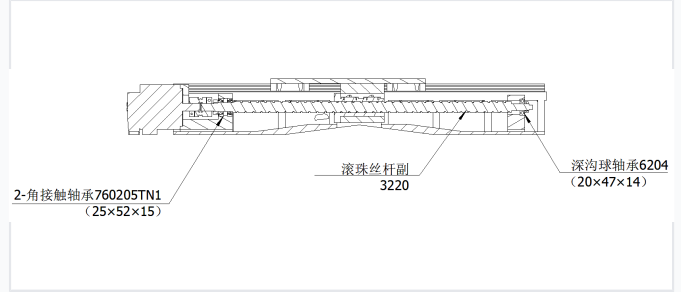
## Dimensions and Capacity

Worktable Size	800mm x 450mm
X/Y/Z Axis Travel	580mm / 350mm / 480mm
Overall Dimensions	2000mm x 2300mm x 2200mm

## Technical Details



Internal mechanical arrangement showing the main motor seat, synchronous belt pulley, and spindle assembly integration.



Detailed view of the ball screw and bearing assembly, including angular contact and deep groove ball bearings critical for linear motion.

### Axis Feed Motors

- X-Axis: 1.3KW
- Y-Axis: 2.9KW
- Z-Axis: 1.3KW

### Tool Magazine Type

BT40-16T Disc Type

### Critical Mechanical Components

Ball Screw, Angular Contact Bearings, Deep Groove Ball Bearings, Synchronous Belt, Automatic Indexing Rotary Table