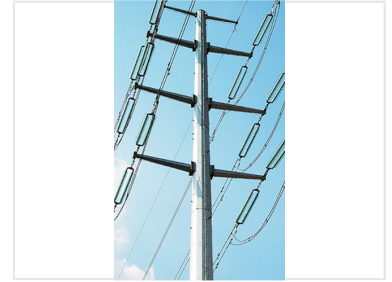


# High-Voltage Power Transmission Line

High-voltage power transmission lines are designed for efficient electricity transfer. They utilize lattice steel towers with insulators and multi-stranded aluminum conductors.



## Product Overview

### High-Voltage Transmission Solutions

These tubular support structures utilize high-strength steel designed for the demands of modern utility infrastructure. Engineered for structural integrity and corrosion resistance, these units feature galvanized steel sections and support multi-circuit configurations. With proven reliability in global markets, these poles offer an efficient solution for long-distance electricity transmission.

## Technical Specifications

### Structural Features

- Tubular monopole design
- Lattice steel tower construction
- Suspension-type insulators
- Multi-circuit capacity

### Key Markets Served

North America • Europe • Asia Pacific

### Performance History

**50 Years**

Years of Experience

**30 Million USD**

Annual Export Volume

<b>Material Type</b>	High strength steel with low silicon content
<b>Surface Finish</b>	Galvanized
<b>Compliance and Ratings</b>	Utility Grade, High-Strength, Corrosion Resistant