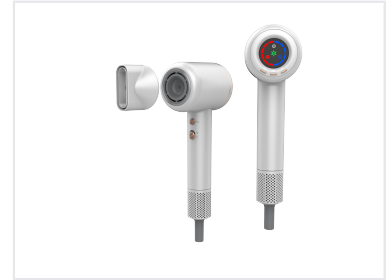


High-Speed Hair Dryer with LCD Display

This high-speed hair dryer features a 110,000rpm motor for fast and efficient drying. It offers multiple speed and temperature settings, including a cool shot, and an LCD display for easy monitoring.



Overview

Professional High-Speed Drying

This high-speed hair dryer features a powerful 110,000rpm brushless motor and advanced ionic technology to deliver salon-quality results. Designed for efficiency, it offers 3 speed settings and 4 temperature levels, all easily monitored via the integrated LCD display. With its lightweight build and ultra-silence technology, it provides a comfortable and quiet drying experience suitable for professional or personal use.

Performance

Key Performance Metrics

110000 rpm

Motor Speed

1600 W

Power Output

15 L/S

Airflow

Electrical Input

220-240V~ 50Hz

Features

Control Configuration

- 3 Speed settings
- 4 Temperature settings
- Hot/Cool wind circulation mode
- LCD status display

Advanced Technologies

Ionic Generator, Ultra-silence Technology, Overheating Protection, Magnetic Attachments

Logistics

Logistics & Packaging

Metric	Value
Units per Carton	4 pcs
Gross Weight	4 kg
Net Weight	3.5 kg
20' Container Capacity	2120 pcs
40HQ Container Capacity	5160 pcs