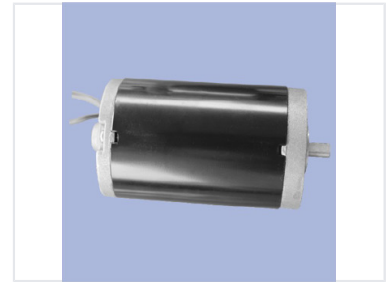


# High-Speed Electric Motor for Industrial Applications

This high-speed electric motor is designed for industrial and mechanical applications. It features a durable construction and reliable power transmission via a shaft extending from one end.



## Overview

### High-Speed Industrial Motor

This high-speed electric motor is engineered for robust industrial and mechanical applications. Featuring a durable cylindrical body and precision-engineered end caps, it is built to withstand demanding operational environments. The unit includes a dedicated power transmission shaft, making it an ideal component for machinery requiring consistent and reliable rotational power.

## Technical Design

Construction Material	Cast metal
Design Type	High-Speed, Cylindrical Body

## Application

### Primary Applications

- Industrial machinery
- Mechanical systems
- Rotational power transmission