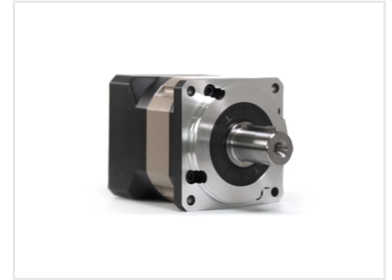


High Precision Planetary Gearbox

This planetary gearbox offers extremely high precision gearing and powerful stability. It provides high efficiency, low noise, and a long service lifetime.



Overview

High Precision Planetary Gearbox

The KPX series is a high-precision planetary gearbox engineered for demanding industrial environments. Utilizing alloy forged steel and advanced helical gear design, it delivers exceptional torque density and torsional stiffness. Its integrated caged planetary carrier and output shaft ensure superior rigidity, making it an ideal solution for precise motion control in robotics, servo systems, and automation equipment.

Technical Construction

Raw Materials	Alloy Forged Steel
Bearing Type	Full Needle Roller Bearings
Gear Design	Helical Gear

Performance Features

Key Performance Metrics

95 %
Efficiency

Operational Benefits

- Low Backlash
- High Torque Density
- High Torsional Stiffness
- Smooth and Quiet Operation
- High Radial and Axial Load Capacity

Applications

Recommended Applications

Servo Systems • Robotics • Automation Equipment