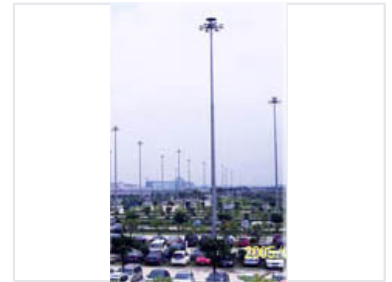


High Mast Area Lighting System

This pole-mounted lighting system is designed for illuminating large outdoor areas. It features multiple high-intensity luminaires at the top of a galvanized steel pole, providing widespread and uniform light distribution.



Overview

High Mast Area Lighting System

This tall, pole-mounted high mast lighting system is engineered for large-scale outdoor illumination, making it ideal for parking lots, roadways, and industrial sites. Featuring a cluster of multiple high-intensity luminaires atop a slender, galvanized steel pole, the system ensures widespread and uniform light distribution. Its modular, sectional design facilitates ease of transport and installation, while the high-efficiency lighting technology provides a long lifespan and optimal visibility with minimal glare.

Technical Specifications

Installation Features

- Sectional pole design
- Easy transport
- Simplified assembly

Pole Construction

Galvanized steel, sectional design

Application Areas

Parking Lots, Roadways, Industrial Sites, Large Outdoor Areas

Performance

Lighting Performance

2005

Model Year / Series Identifier

Illumination Quality

Uniform Distribution • Minimal Glare • High Intensity