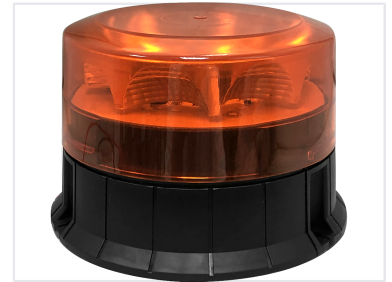


High-Intensity LED Beacon for Hazard Warning

This high-intensity LED beacon is ECE R65/R10 approved. It provides high light efficiency through its enhanced reflector design.



Overview

High-Intensity Hazard Beacon

This high-intensity LED beacon is specifically engineered for robust signaling and hazard warning applications in demanding environments. Featuring a durable polycarbonate dome and a resilient nylon/rubber base, it is built to withstand significant vibration and weather exposure. With its versatile voltage compatibility and IP65 rating, it serves as a reliable solution for construction, industrial, and emergency vehicle safety.

Technical Specifications

Waterproof Rating

IP65

Light Source

8 LEDs

Working Voltage

DC 12V, DC 24V

Model Identifier

EA9818

Environmental & Build

Operating Temperature Range

-30

Min Temp

50

Max Temp

Construction Materials

- Polycarbonate (Dome)
- Nylon / Rubber (Base)