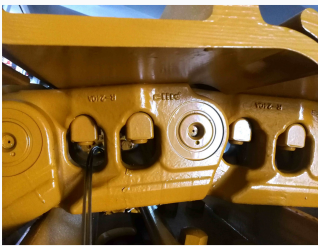


Heavy Duty Track Group for Construction Machinery

This track group is designed for use in heavy construction machinery. It provides superior traction and stability on various terrains.



ADDITIONAL IMAGES



Product Overview

Heavy Duty Track Groups

Engineered for demanding environments including mining, forestry, and construction, our heavy-duty track groups ensure optimal performance and extended service life. Utilizing advanced machining processes and induction hardening on link rail surfaces, these components provide superior resistance to wear and fatigue. We offer a versatile range of configurations, including sealed and greased or sealed and lubricated options, designed to fit a wide variety of excavators and crawler machines.

Technical Specifications

Performance Gain (SALT vs Greased)

30 %

Minimum Service Life Increase

50 %

Maximum Service Life Increase

Available Track Types

Sealed and Greased, Sealed and Lubricated, Dry Type

Construction & Engineering

Key Engineering Features

- Induction hardening on rail surfaces
- Quenched and tempered links
- Precision dimension tolerances
- Customizable PPR structure available
- Compatible with various track shoe designs

Application Compatibility

Suitable Industries

Mining • Forestry • Quarry • Construction • Agriculture

Compatible Machinery

- Excavators
- Bulldozers
- Crawler Machines