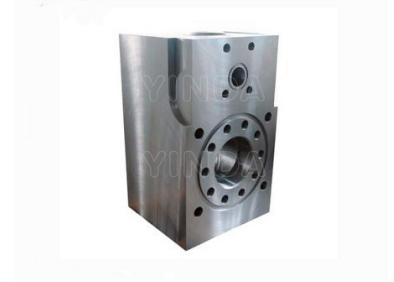


# Heavy-Duty Hydraulic Cylinder

This hydraulic cylinder is made of high-quality alloy steel 35CrMo or 40CrMo. The inner wall hardness reaches HB285-330, with mechanical properties of Sigma B e 850/MPC, Sigma S e 670/MPC,  $\epsilon$  e 15% and Talent e 13%.



## Product Overview

### Heavy-Duty Hydraulic Cylinder

This heavy-duty hydraulic cylinder is engineered for demanding industrial and construction applications. Constructed from high-quality alloy steel, it offers exceptional durability and wear resistance. The inner wall is precision-honed to ensure optimal sealing and smooth, reliable operation under load.

## Material Specifications

Material Composition	35CrMo, 40CrMo
Inner Wall Hardness	330 HB

## Mechanical Properties

### Key Mechanical Metrics

**850 MPC**

Tensile Strength (Sigma B)

**670 MPC**

Yield Strength (Sigma S)

### Elongation and Toughness

Property	Minimum Value
Elongation ( $\epsilon$ )	e 15%
Toughness	e 13%