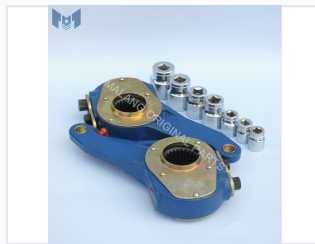
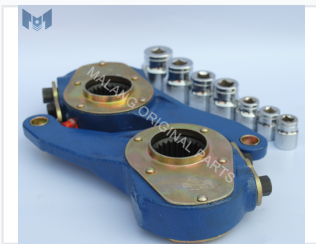


Heavy-Duty Brake Adjuster

This heavy-duty brake adjuster is designed for optimal performance and durability in braking systems. It features precision-engineered components for reliable adjustment and consistent braking force in various vehicle applications.



ADDITIONAL IMAGES



Product Overview

Heavy-Duty Performance

This heavy-duty brake adjuster is engineered to maintain continuous and efficient gap automatic adjustment between the brake drum, brake pad, and camshaft. Designed for durability in demanding operating conditions, it features a robust construction with precision-engineered components. Its design ensures minimal wear, extended service life, and consistent braking force for heavy-duty vehicle applications.

Technical Specifications

Operational Details

- Maintains gap between brake drum and pad
- Ensures precise brake force modulation
- Splined central bore for secure camshaft attachment
- Protective coating for extended service life

Material	Steel
Net Weight	2.2 Kg
Key Features	Automatic Adjustment, Corrosion Resistant, Heavy-Duty, Splined Interface