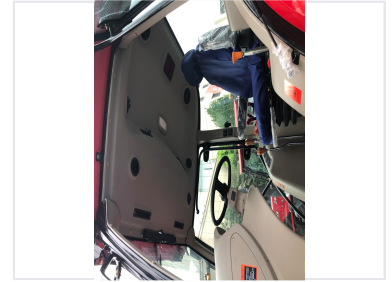
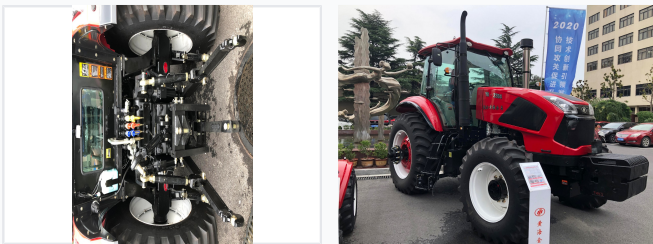


Heavy-Duty Agricultural Tractor

This heavy-duty tractor is designed for a wide range of agricultural tasks. Featuring a powerful engine and ergonomic design, it delivers reliable performance and operator comfort.



ADDITIONAL IMAGES



Overview

High-Performance Heavy-Duty Tractor

This heavy-duty tractor series is engineered for demanding agricultural tasks, offering a robust carbon fiber hood design and high-efficiency electronically controlled common rail engines. With a focus on operator comfort and long-duration efficiency, it features a 400-liter fuel tank and an advanced hydraulic assist system for brakes and clutches. The versatile transmission provides 32 forward and 32 reverse gears, ensuring precision control across diverse terrains.

Performance & Engine

Maximum Lifting Force

45 KN

Max Lifting Force

Engine Features

Electronically Controlled, High-Pressure Common Rail, Large Torque Reserve, Fuel Efficient

Transmission & Hydraulics

Gearbox Configuration

Shuttle shift with creeper gears

Gear Ratio

32 Forward / 32 Reverse

Clutch Size

15 inches

Operation & Capacity

Tire Options

- Standard Agricultural: 16.9-28, 20.8-38
- Radial: 420/85R28, 520/85R38
- Radial: 480/70R28, 580/70R38

Fuel Tank Capacity

400 L

Design & Build

Hood Material

Carbon Fiber

Cooling System

Large model water tank with external small bottle structure